

# Tariff breakdown

MINI GUIDE

## Manhattan Plaza

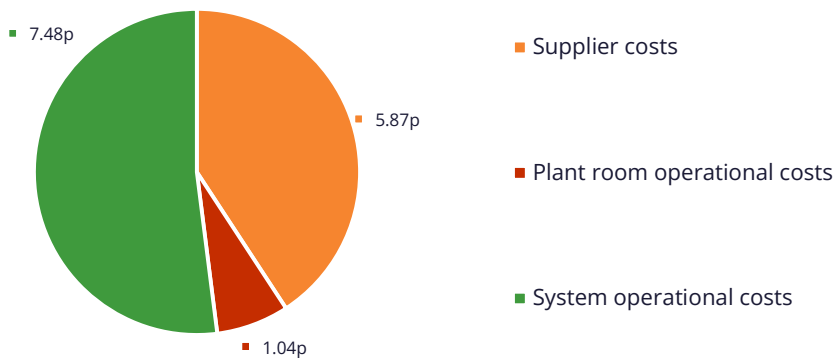
Insite Energy, have been appointed as ESCo Manager by Manhattan Plaza Ltd, we will provide all operational services associated with your heat network.

Below is an explanation of your **heating & hot water** tariff calculations. These solely cover operational costs, and your heat supplier makes no profit from this.

For more information on why your tariff has been reviewed, please refer to the Tariff change notification letter sent to you.

### Your unit rate breakdown

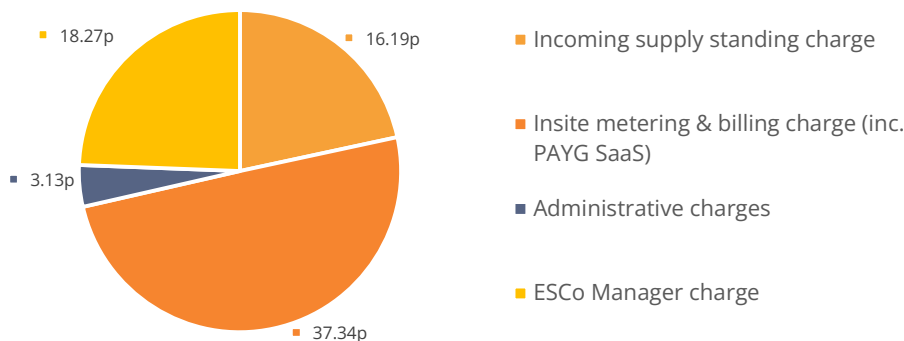
14.38 p/kWh



The average operational costs for a heat network equates to 56% of the unit charge breakdown.

### Your daily standing charge breakdown

74.93 p/day



**⚠ Please note, your heat supplier does not profit from the operation of your heat network**

### Standard components of your heat tariff

Your **unit rate** covers the bulk cost of the energy generated in the communal plant room. It also includes any associated heat losses between the supply point and your home. Your energy consumption is measured via the heat meter installed in your home, so you only pay for what you have used. You are charged for every kilowatt-hour (kWh) consumed within your property.

Your **daily standing charge** is the fixed charge passed on by your heat provider, which covers the cost of operating the heat network and delivering energy to your home. This is an annual fixed amount that is payable every day by all residents regardless of how much energy they use.

Depending on your heat provider, the costs associated with running and maintaining the heat network will either be included within your building service charge or your heating and hot water daily standing charge.

